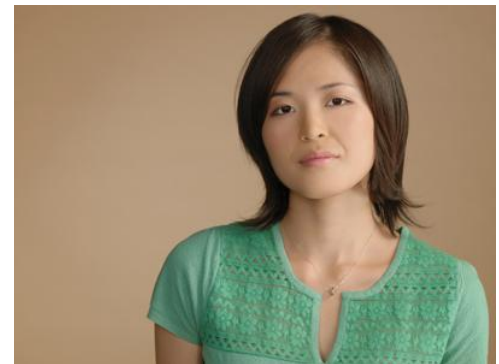


Women's College Hospital's Collaborative Task Force on Uninsured and Undocumented Clients

“Working Together with Community”

Health Achieve 2008



Women's College Hospital

new thinking

Women's College Hospital Responding to Health Disparities

- The Women's Health Community Advisory Panel at Women's College Hospital (WCH) identified access to health services for people without health insurance as a key community concern
- WCH Board of Directors established the Collaborative Task Force on Uninsured and Undocumented Clients (Task Force) in April 2007 as a forum to explore the problem and its solutions



Building on Existing Community Expertise

- Task Force is built upon existing network of community providers with expertise working with people without health insurance
- Growing membership includes
 - hospitals
 - community health centres
 - public health
 - women's, immigrant and refugee, street, lesbian/gay/bi/trans/queer, HIV health services
 - settlement services
 - academic and research institutions
 - grassroots coalitions involving people without health insurance



Understanding the Problem



Task Force is a forum to

- share experiences and knowledge
- consult with other experts (on physicians, health equity, women's health, other jurisdictions, community activism)
- connect with other networks, such as
 - Hospital Collaborative on Marginalized Populations
 - Community Health Centre Association
 - City-wide networks: SETo, Solutions, WEUHA
 - Right to Health Care Coalition, Rights of non status women, No one is illegal campaign
- conduct research
- develop issue specific ad hoc committees



Women's College Hospital

new thinking

What We Are Learning

- **widely varying practices and policies exist amongst hospitals and community services**
- **vulnerable people and agencies serving them incur damaging delays and even denial of care**
- **uninsured often seek help too late, in dire condition or in crisis**
- **uninsured can face discriminatory and unfair treatment**
- **appropriate follow up and preventive care is non-existent**



Identifying Nature of Problem



- **gaps in information; complexity of reasons for why people are without health insurance**
- **need for research, e.g. survey of existing knowledge, expertise**
- **understanding administrative and organizational constraints for hospitals and providers**
- **existing services overburdened**
- **lack of coherent approach**



Time for Working Together

- **the issue is not going away - impacts all hospitals and community health services**
- **a population is in desperate need**
- **issue at Local Health Integration Network level**
- **chance to make a difference together, working in a coordinated and system wide way**



Women's College Hospital

new thinking

Participants in the Women's College Hospital's Collaborative Task Force on Uninsured and Undocumented Clients

Individuals and representatives from:

Hospitals: Women's College Hospital, St. Joseph's Health Centre, St. Michael's Hospital

Community Health Centres: South Riverdale, Women's Health in Women's Hands, Four Villages, Access Alliance, Regent's Park, Planned Parenthood of Toronto, Community Health Centres of Greater Toronto

Community and Other Organizations: Immigrant Women's Health Centre, St. Christopher House, Sherbourne Health Centre, Rouge Valley Midwives, FCJ Refugee Centre, Ontario Council of Agencies Serving Immigrants, Committee for Accessible AIDS Treatment, Street Health, York Community Services, Toronto Public Health, York University Centre for Refugee Studies, York Institute for Health Research, University of Toronto Faculty of Nursing, Centre for Research in Inner City Health

For further information, please contact:

**Linda Gardner, Diversity and Community Access Coordinator
Women's College Hospital**

Email: linda.gardner@wchospital.ca



Women's College Hospital

new thinking